



**ROYAL ARMOURIES**

CONFERENCES & EVENTS

One of the largest flexible creative event spaces in Yorkshire





## ABOUT THE VENUE

The Royal Armouries & New Dock Hall is the largest dedicated conference, events and exhibition space in Leeds.

Our venue offers world-class facilities for high-profile conferences, conventions, exhibitions, awards dinners and corporate events for up to 2,500 delegates, hosting more than 380 national and international events every year.

We have been game changers and innovators for events for more than 20 years and we are proud to have an unrivalled reputation for excellence and exceptional customer service.

With stunning views of Leeds Dock to wow your delegates, unbeatable transport links, 11 versatile event spaces, award winning catering and audio-visual team, the modern, vibrant Royal Armouries and New Dock Hall can't be beaten.



“ We were very pleased with the event on Friday – **The Royal Armouries is such a lovely venue** to visit and both yourself and Richard always make us feel very welcome, thank you for that!”

**IDE**



“First of all thank you for the venue, **it was brilliant** and Tatty was a diamond (hold on to him, a great asset to the team)”

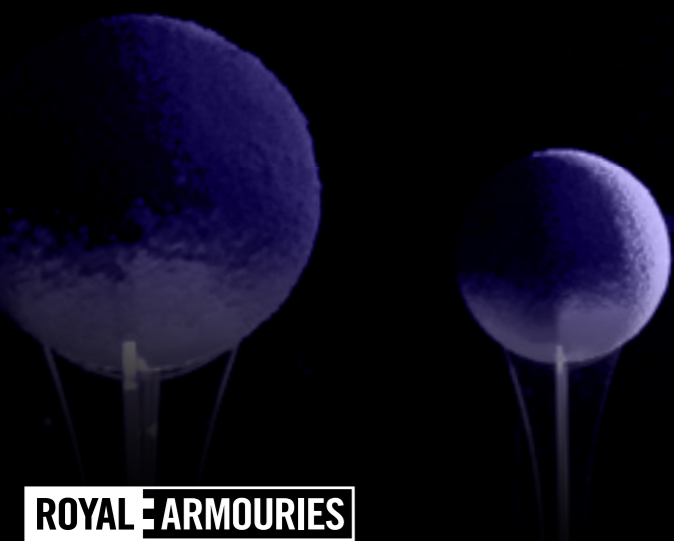
**LHVA**



# VERSATILE SPACES

The Royal Armouries and New Dock are a blank canvas. Both event spaces have the ability to be transformed to create unique events.

Our three flagship event spaces – the Royal Armouries Hall, the Pearl Suite, and our New Dock Hall – are all flexible rooms that can host ground-breaking conferences by day and dazzling dinners by night.



## NEW DOCK HALL

Adjacent to the Royal Armouries Museum, New Dock Hall has a contemporary minimalist feel providing you with the perfect blank canvas to create your event.

Our largest event space, the New Dock Hall is a magnificent uninterrupted and column-free space that can be used for conventional exhibition layouts or for more unusual installations. The Hall offers limitless scope for presentations, conferences, exhibitions, awards dinners and product launches. Situated on the ground floor the space is fully serviced and flexible. The New Dock can be used in conjunction with The Royal Armouries Hall as part of larger mutli-scale events.

Bar facilities are available and there is a dedicated kitchen next to the hall providing immediate quality service for guests to indulge in your menu choice, whether buffet style or full banquet service.



## ROYAL ARMOURIES HALL

Situated in the heart of the museum, the Royal Armouries Hall is a multi-purpose flexible space with a range of layouts.

This remarkable space offers theatre or caberet style seating with the the added advantage of being able to divide into three sections. The hall is ideal for conferences, dinners and presentations.

The hall links directly to the Bury lecture theatre and the Vera Suite which gives the flexibility of larger events that require break-out rooms, registration or dedicated refreshment area.



## BURY THEATRE

The Bury Lecture Theatre is a purpose built, self-contained, air-conditioned lecture theatre over two tiers. This stylish facility can accommodate from 70 to 250 delegates in comfortable, cinema style seating. Its gently sloping floors provide excellent sight lines to the fixed stage, together with its data projection facility, in-house sound and lighting systems.

Wi-Fi connectivity makes the Bury Lecture Theatre an ideal venue for plenary sessions, high-profile presentations, lectures and product launches. The room can be accessed from the ground floor and first floor. For delegate registration, refreshments and exhibition space you can use either the first floor adjacent Pearl suite or the adjoining Armouries Hall A and/or B space. The Bury Theatre can be used independently or in conjunction with the Royal Armouries Hall on the ground floor and/or the adjacent Pear Suite on the first floor or with other rooms as part of a larger event.



# CONFERENCES & MEETINGS

Meetings, conferences, exhibitions and more; we have the perfect space to bring your audience together.

We offer extraordinary platforms to support audience engagement whether you're hosting a sales kick off, product launch, senior leadership conference or training workshop.

And when it's time to celebrate success over dinner and awards, we have the space for you to creatively express your corporate identity and culture.

We have extensive credentials in sectors such as associations, automotive, retail, finance, legal, banking and technology.



"I just wanted to say a huge thank you for all your hard work and support at our event on Thursday/Friday last week.

**Nothing was too much trouble for you**, and your support to Gordon, Jane and myself was second to none. Thanks once again for all your support and hard work over the two days"

**PPG**





# DINNERS & RECEPTIONS

As hospitality specialists dedicated to the delivery of exceptional dining experiences our highly skilled, passionate team are equipped with all the knowledge, support and creativity required to take your event to the next level.

The Royal Armouries and New Dock Hall is well known as a venue for conferences and exhibitions, however we are also able to offer a superb setting for all types of events including receptions, dinners and parties.

Whether you are planning a large gala dinner, canape reception or a luxury private dining experience we have unrivaled packages which put our client at the heart of all we do. We believe we have settings suitable for every occasion.

Guests are able to experience exceptional food and wines, delivered by the award-winning Royal Armouries Taste team, whilst enjoying the backdrop of some of the museum's finest collections.

Several of our spaces are particularly suited to awards dinners. New Dock Hall on the ground floor has a permanent star cloth and moving lights system installed. The Pearl Suite on the first floor now offers one of Leeds most spectacular events settings overlooking Leeds Dock.



## FOOD ETHOS

Wonderful ingredients, beautifully crafted are just that – glorious. We are committed to buying fresh, seasonal and ethically sourced produce. We know that fresh is best, so our recipes are always cooked on the day that our customers enjoy them.

We challenge our teams to be creative and allow them space to play, to create menus that delight our guests. For us, it is always about challenging the norm and never settling for second best; working with unapologetic foodies whose energy and desire to be the best matches our own.

## INSPIRATIONAL SPACES IN THE VERY HEART OF LEEDS

Our events team loves a challenge, and in recent years they've had several opportunities to showcase what they can do and how dramatically the Royal Armouries and New Dock Hall can be transformed.

We've seen the centre go from an icy Winter Wonderland to sizzling South American samba party; seamlessly transition from an indoor garden party through a larger-than-life pop-up circus to an American 1950s-style drive-thru cinema and host an immersive 80s experience, before offering a glimpse of what's to come at a futuristic dining banquet.

No matter what your vision, we can help you create innovative and exciting events that exceed expectations and impress your guests – the bigger the challenge, the better.



# VENUE CAPACITIES

Venue	Location	Max cap	Reception	Theatre	Boardroom	Dinner	Cabaret	Ground events
New Dock Hall	Ground Floor	1500	1500	1200	N/A	1100	750	N/A
Royal Armouries Hall	Ground Floor	1000	1000	600	N/A	800	250	N/A
Bury Theatre	Ground Floor	250	N/A	250	N/A	N/A	N/A	N/A
Pearl Suite	1st Floor	200	200	200	40	168	100	N/A
Vera Suite	Ground Floor	100	100	60	20	50	32	N/A
Cinema of War	2nd Floor	90	N/A	90	N/A	N/A	N/A	N/A
News Room	Ground Floor	300	300	300	N/A	220	160	N/A
Hotot Suite	1st Floor	100	100	60	30	50	40	N/A
Barton Suite	1st Floor	100	100	60	30	50	40	N/A
Aire Suite	1st Floor	100	100	60	30	50	40	N/A
The Masters	Ground Floor	200	200	N/A	30	30	N/A	N/A
Hall of Steel	Ground Floor	400	400	N/A	N/A	40	N/A	N/A
War Gallery	2nd Floor	200	200	N/A	N/A	160	N/A	N/A
Tournament Gallery	2nd Floor	200	200	N/A	N/A	60	N/A	N/A
Asian and African Gallery	4th Floor	300	300	N/A	N/A	80	N/A	N/A
Reloaded Gallery	4th Floor	100	100	N/A	N/A	16	N/A	N/A
Museum Square	Ground Floor	2500	2500	N/A	N/A	N/A	N/A	2500
Tilt Yard	Ground Floor	2500	2500	N/A	N/A	N/A	N/A	2500



# EVENTS TEAM

Our venue has a passionate team of events planners on hand that will work with you throughout the planning process to meet your exact requirements, and ensure every guest leaves satisfied.

Shine is our bespoke customer engagement programme. With this programme, we will be able to deliver first class service for our guests & clients.

- S Strive
- H High service standards
- I Impressions
- N Natural
- E Exceed expectations

**OUR PROMISE**  
 We will **strive** to always deliver **high service standards** through fantastic lasting **impressions** with a **natural** service style that **exceeds expectations**





# ROYAL ARMOURIES LIVE

Our in-house AV team Royal Armouries Live can bring your event to life.

Our creative AV manager will provide guidance and expertise every stage of the way from initial planning to event delivery and are on hand to make your experience at the Royal Armouries and New Dock Hall memorable for all the right reasons. The team's expertise spans sound, lighting, staging, data projection, video conferencing, live satellite links, streaming and simultaneous interpretation.

## TECHNOLOGY AND FACILITIES INCLUDE

- Flexible AV Packages
- Digital Signage and Displays
- Advanced Audio and Video Communications including IPTV
- High Definition and PIP Capabilities
- Digital Content Creation Team
- Hybrid Packages



# ICT & TELECOMS

We have an in-house IT team and we are continually upgrading our infrastructure and equipment.

We can supply you with PCs, laptops, plasma screens, telephones and printers, high speed and hard-wired internet connections and networking.

You and your exhibitors can order your IT online or contact by email, [venuehire@armouries.org.uk](mailto:venuehire@armouries.org.uk) or call 0113 220 1990

# ROYAL ARMOURIES TASTE

Food can create memorable, stand-out experiences for your delegates and guests. Award-winning in-house caterers, Royal Armouries Taste demonstrate innovation and excellence in their delivery of on-trend, fresh and uncomplicated food.

They can create memorable canapes, exquisite fine dining options as well as fork buffets and bowl food menus. Our catering offer can be adapted to fit your event, whether it's a training day, awards dinner, Christmas party or international convention.

Our menus reflect our commitment to innovative, fresh, uncomplicated food, made with fantastic ingredients and beautifully presented.

All our menus now include more vegetarian and healthy choices, in response to an increased demand for lighter options. Our balanced choice menus feature information including guideline daily allowances and nutritional analysis and we operate an allergen log at all our events.

We work with our clients to create bespoke catering solutions, rather than taking a one size fits all approach. Tastings form an important part of our client experience and our head chef is always happy to advise on alternatives, suggest creative ways to accommodate special dietary requirements or create menus themed for your event, to deliver dining that's a cut above your average venue.



“First of all thank you for the venue, **it was brilliant** and Tatty was a diamond (hold on to him, a great asset to the team)”

**SIMPLY LADIES**



# LOCATION

Situated close to the city centre on the bank of the River Aire, the museum is among many buildings built in the same era that saw a rejuvenation of the Leeds waterfront. It is located on Armouries Square, in Leeds Dock.

Our venue is perfectly placed to experience everything Leeds has to offer, from world-class restaurants and nightlife to shopping and cultural attractions. The Royal Armouries boasts superb transport links, within walking distance from Leeds train station, or by Leeds Watertaxi. Close to three major motorway links, M1, M62 and M621 along with three airports under 1 hour away and London around 2hr via train. Road access is by Armouries Drive and Chadwick Street.

## FIVE AIRPORTS UNDER AN HOUR AWAY

- LEEDS
- BRADFORD
- MANCHESTER
- DONCASTER
- SHEFFIELD



# HOTELS

Royal Armouries benefits from 4,000 hotel rooms, ranging from budget to executive luxury accommodation, all just a short stroll from the venue.

All of the hotels are easily accessible by public transport and, by virtue of their proximity to the Royal Armouries and New Dock hall, are also close to some of Leeds most impressive attractions.





# ROYAL ARMOURIES HALL

Easily accessible on the ground floor and near to the Museum's main public entrance, the Royal Armouries hall is divisible, flexible and adaptable with a range of seating arrangements and layouts.

This remarkable room offers theatre style or cabaret style seating and has the added advantage of being able to divide into three sections. Staging can be placed in two main areas in the room together with flown data projection facilities and surround sound.

Royal Armouries hall C can be used in conjunction with A & B as one room or divided into 3 separate rooms. The hall is ideal for high profile presentations, lectures and production launches.

The hall can link directly to the Bury lecture theatre on one side and the Vera Suite on the other which can be used as a registration area or as a dedicated bar for refreshments.

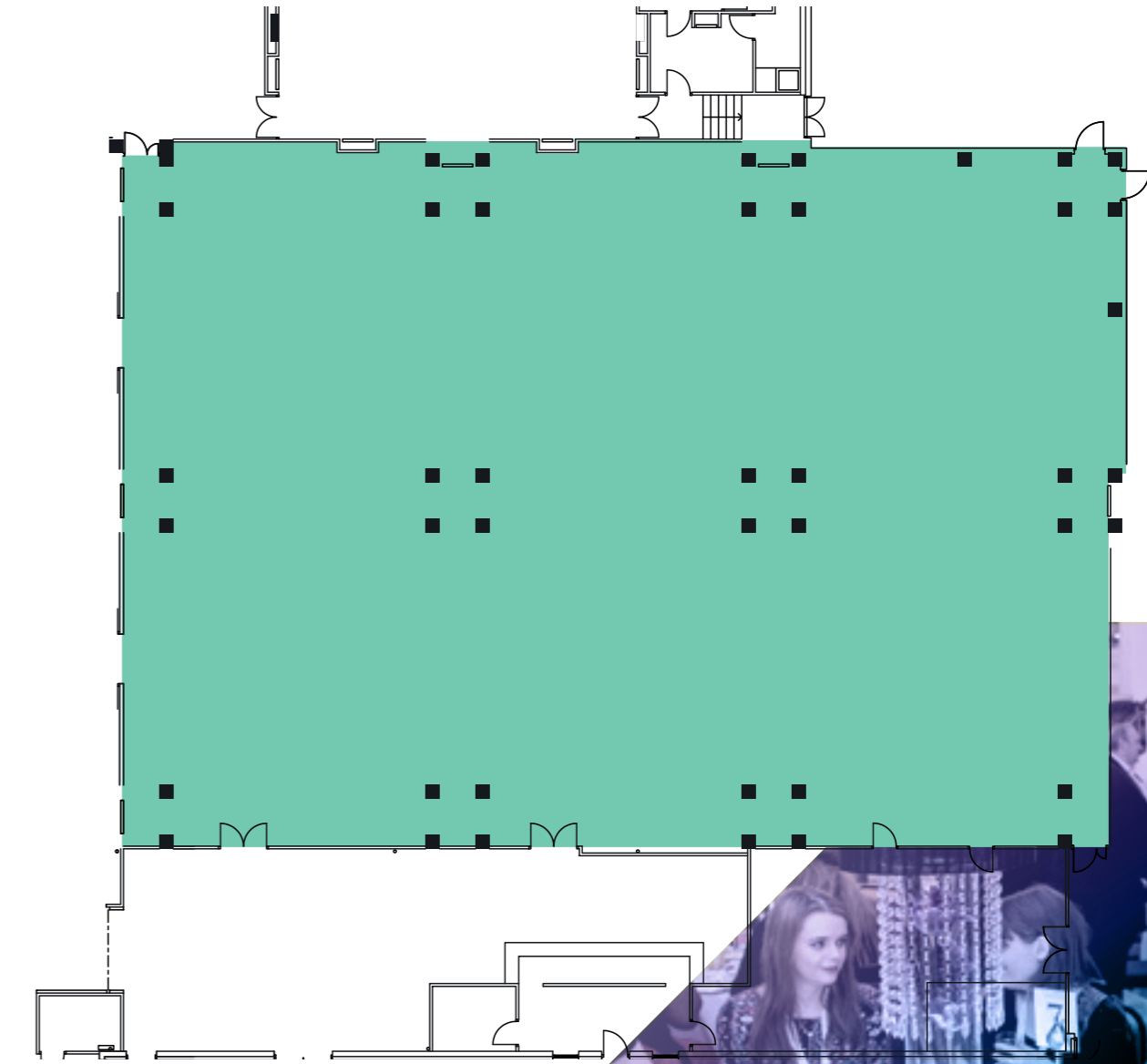


CAPACITIES	MIN	MAX
Reception	150	1000
Theatre	70	500
Banquet	60	700
Cabaret	50	250

DIMENSIONS	
Main Hall	24.6m x 36m
Hall A	13m x 11.7m
Hall B	11.6m x 11.7m
Hall C	26.6m x 24.3m

LOCATION Ground Floor

FLOOR SPACE (M <sup>2</sup> )	
Main Hall	886
Hall A	152
Hall B	136
Hall C	598



KEY

- Toilets
- Pillars
- 13A double floor sockets





# NEW DOCK HALL

Adjacent to the Royal Armouries Museum, New Dock Hall has a contemporary minimalist feel providing you with the perfect blank canvas to create your event.

Our largest event space and one of Leeds's largest banqueting and exhibition venue New Dock Hall – is unrestricted by pillars, giving limitless scope for your presentations and creative ideas and so is ideal for anything from conferences and exhibitions to gala dinners, impressive product launches and meetings.

Situated on the ground floor this space is fully serviced, flexible and adaptable in it's own right or can be used in combination with room's at the Royal Armouries Museum as part of larger scale events.

Bar facilities are available and there is a dedicated kitchen next to the hall providing immediate quality service for guests to indulge in your menu choice, whether buffet style or full banquet service.



CAPACITIES	MIN	MAX
Reception	350	1500
Theatre	350	1200
Banquet	350	1000
Cabaret	350	750

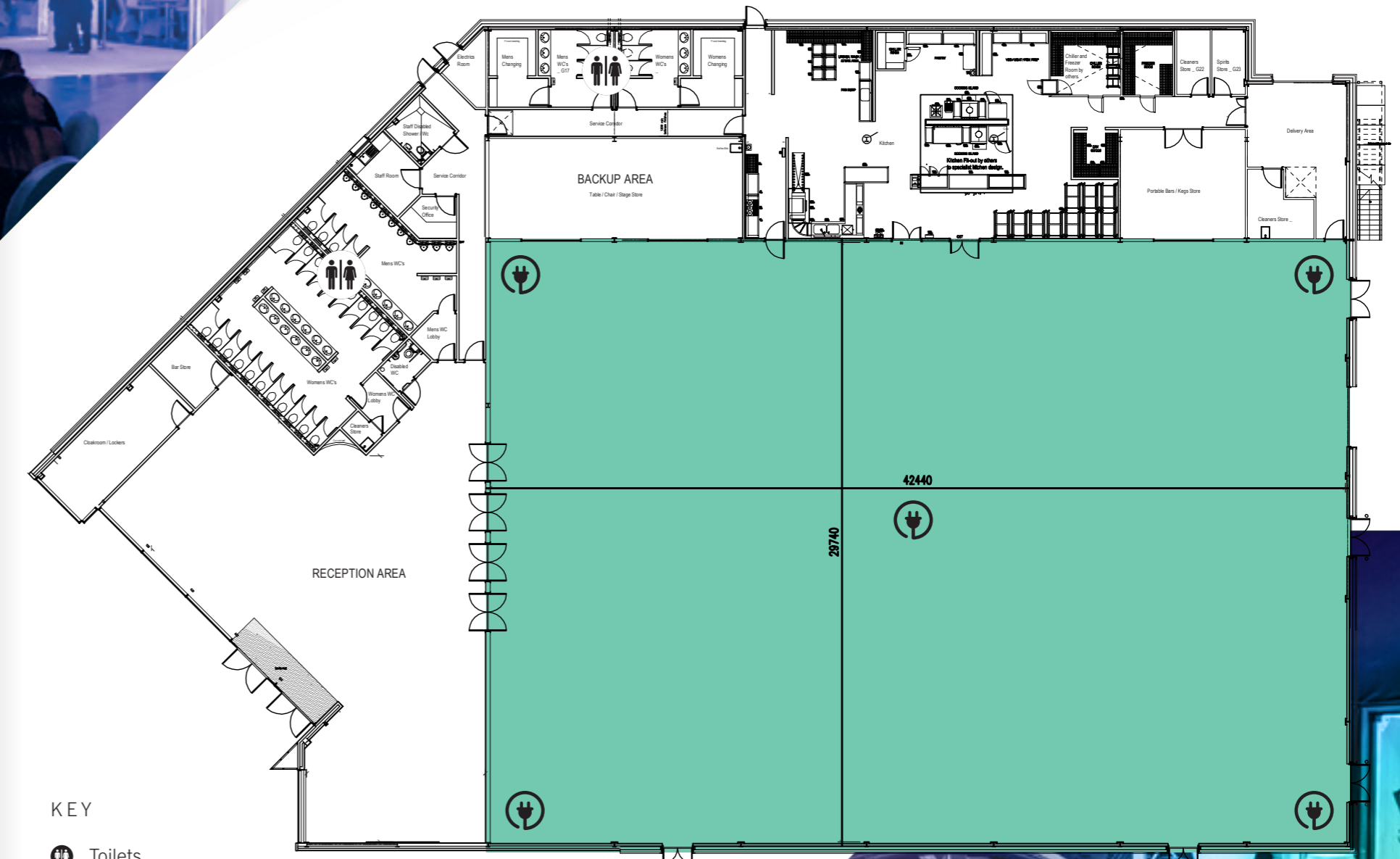
DIMENSIONS	
Main Hall	42.3m x 29.7m

LOCATION	
	Ground Floor

FLOOR SPACE (M <sup>2</sup> )	
	1259



- KEY
- Toilets
  - Pillars
  - 13A double floor sockets





# BURY THEATRE

The Bury Lecture Theatre is a purpose built, self-contained, air-conditioned lecture theatre over two tiers. This stylish facility can accommodate from 70 to 250 delegates in comfortable, cinema style seating.

Its gently sloping floors provide excellent sight lines to the fixed stage, together with its data projection facility, in-house sound and lighting systems.

Wi-Fi connectivity makes the Bury Lecture Theatre an ideal venue for plenary sessions, high-profile presentations, lectures and product launches. The room can be accessed from the ground floor and first floor.

For delegate registration, refreshments and exhibition space you can use either the first floor adjacent Pearl suite or the adjoining Armouries Hall A and/or B space.

The Bury Theatre can be used independently or in conjunction with the Royal Armouries Hall on the ground floor and/or the adjacent Pearl suite on the first floor or with other rooms as part of a larger event. This is our clients most popular arrangement.

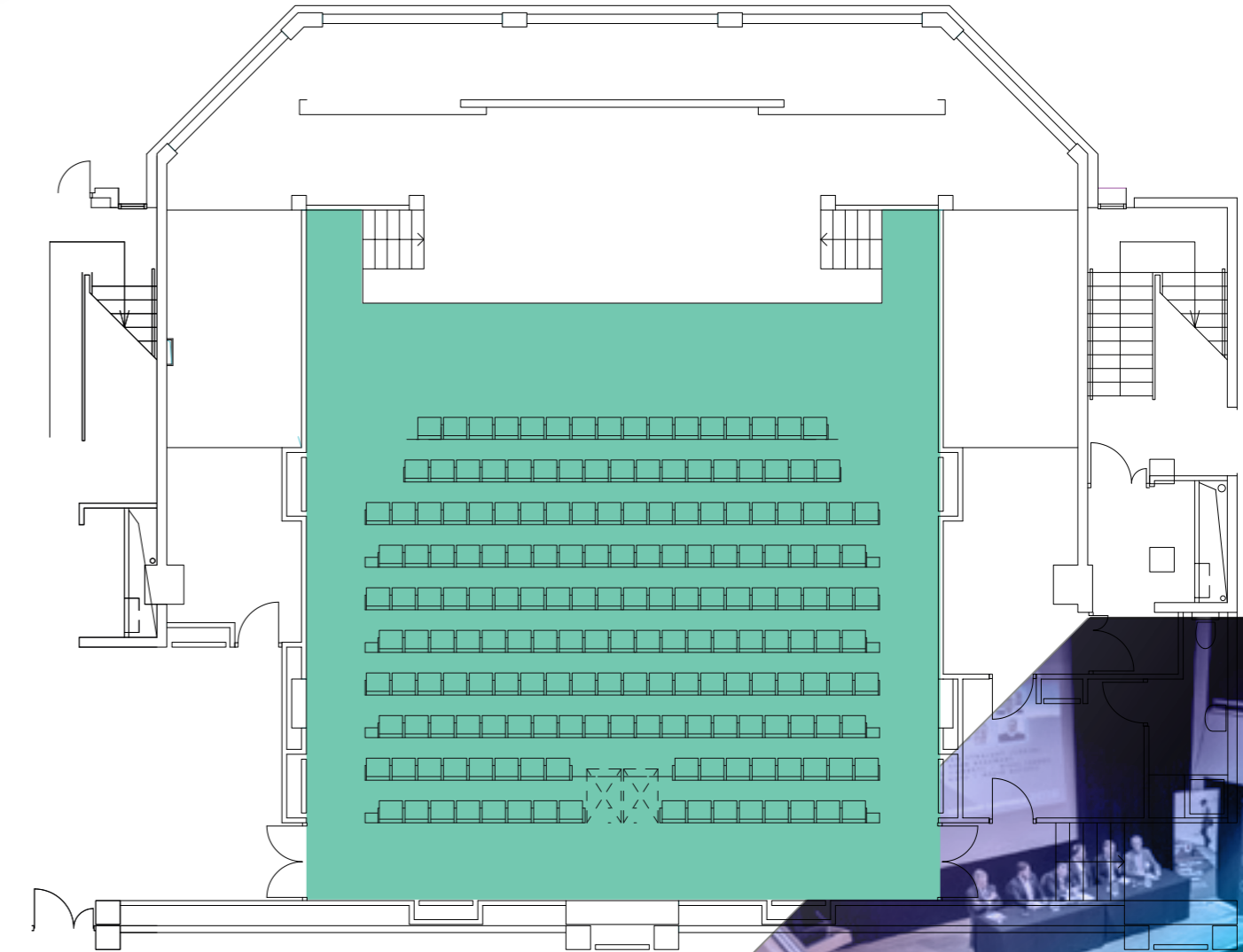


CAPACITIES	MIN	MAX
Reception	n/a	n/a
Theatre	64	250
Banquet	n/a	n/a
Cabaret	n/a	n/a

DIMENSIONS	
Stalls	16m x 16m
Balcony	2.5m x 16m

LOCATION Ground Floor & First

FLOOR SPACE (M2)	
Stalls	208
Balcony	40



- KEY
- Toilets
  - Pillars
  - 13A double floor sockets



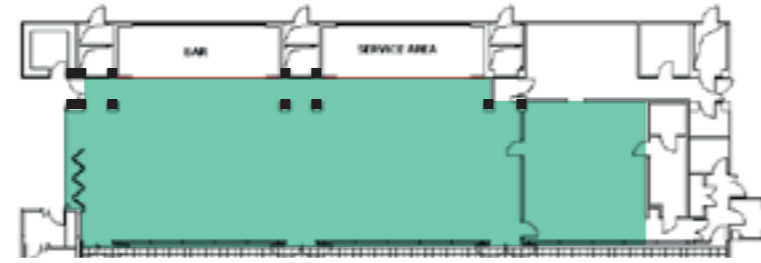


# PEARL SUITE

The Pearl Suite on the first floor of the museum boasts floor to ceiling windows offering breathtaking views of Leeds Dock.

The Pearl Suite is a popular space for conferences, luncheons, business breakfasts, intimate banquets and Christmas parties. It's light, airy space overlooks Leeds Dock and offers an ideal venue for displays and exhibitions, giving delegates ample opportunity to network with speakers and/or exhibitors.

This space is ideal for meetings set theatre or cabaret style and for private dining. It also is the perfect room for catering or exhibition space for events using the Bury Theatre.



KEY

- Toilets
- Pillars
- 13A double floor sockets

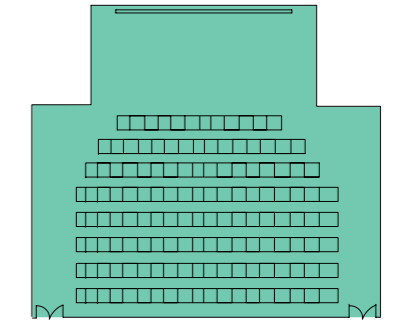
CAPACITIES	MIN	MAX
Reception	80	200
Theatre	60	200
Banquet	60	168
Cabaret	60	100

LOCATION First Floor

# CINEMA OF WAR

This comfortable fixed seating theatre style provides the perfect backdrop for audio-visual displays and presentations which can include video and film from 60 to 90 guests.

This room offers privacy and is self-contained. It is located on the Museum's 2nd floor in the War Gallery, where outside the cinema area your guests can enjoy the museum's collection of arms and armour.



KEY

- Toilets
- Pillars
- 13A double floor sockets

CAPACITIES	MIN	MAX
Reception	n/a	n/a
Theatre	40	117
Banquet	n/a	n/a
Cabaret	n/a	n/a

LOCATION Second Floor



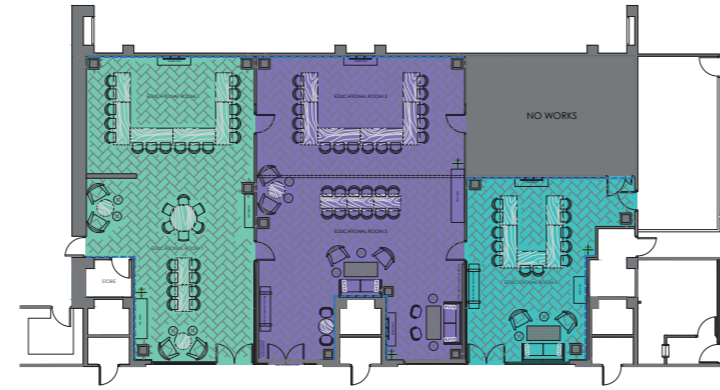


# HOTOT, BARTON AND AIRE SUITE

Our Meeting Suites are an ideal conference or seminar room and can accommodate between 30 and 60 people.

The rooms are all equipped with an 85" LED TV, great for presentations along with built in PA system.

The rooms are located on the first floor, the finish to the rooms have all been finished with sustainable material to give a warm environment for any meeting



KEY

- Toilets
- Pillars
- 13A double floor sockets

KEY

- Barton Suite
- Aire Suite
- Hotot Suite

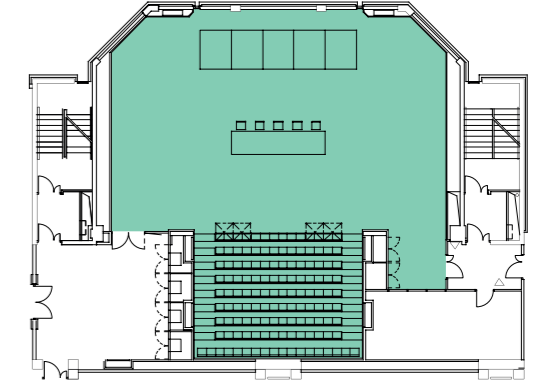
CAPACITIES	MIN	MAX
Reception	20	100
Theatre	20	60
Banquet	20	50
Cabaret	20	40

LOCATION First Floor

# NEWS ROOM

This is a flexible room with some fixed seating and a flexible area in front for presentations or audience participation. Alternatively it can be filled with further seats to maximise capacity.

The News Room has a lobby for delegate registration or display. It is on the museum's fourth floor near the Asian and African Gallery, so your guests can enjoy the Museum's magnificent collection during break times.



KEY

- Toilets
- Pillars
- 13A double floor sockets

CAPACITIES	MIN	MAX
Reception	n/a	n/a
Theatre	80	130
Banquet	n/a	n/a
Cabaret	80	80

LOCATION Third Floor

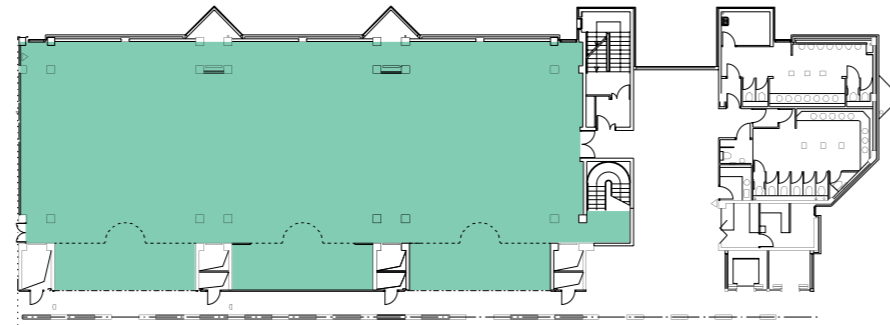


# EXHIBITION GALLERY

Dazzle your clients in our new, temporary exhibition space on the fourth floor.

Currently housing the Re: Loaded exhibition, this newly curated gallery can be transformed for impressive drinks receptions and intimate private dining amongst golden and diamond encrusted firearms, many of which have never been on display before.

In this space we have entertained members of the Estée Lauder family and key clients from some of the world's large blue-chip companies. To accompany your special event, entertainment options include a string quartet or the mellow sounds of an accomplished harpist, while you and your guests marvel at the dazzling objects on display.



KEY

- Toilets
- Pillars
- 13A double floor sockets

CAPACITIES	MIN	MAX
Reception	8	100
Theatre	n/a	n/a
Banquet	8	16
Cabaret	n/a	n/a

LOCATION Fourth Floor

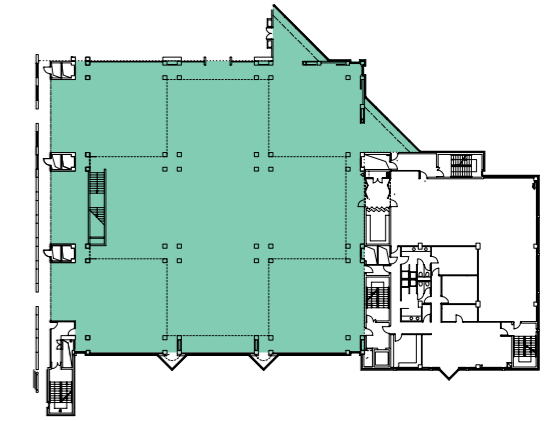


# WAR GALLERY

The Museum's War Gallery is a popular area for creating themed evenings and provides a historic backdrop for your event; where your guests can enjoy an exciting display of dramatic interpretations and live action events.

Enjoy your reception drinks whilst experiencing authentic extracts from the 95th Rifles regiment which formed on the basis of the hit TV series "Sharpe's Rifles". In stark contrast you might want to consider a French account of a very English battle of Hastings where a Norman warrior recalls the famous battles of 1066, or hear an account from an English archer and how it felt to face the might of the French at the battle of Agincourt.

Your sumptuous gala dinner can be specifically designed by our Head Chef using the finest of local produce. The provision of fine wines and vintage ports with exquisite cheeses to delight the palate can round off your evening – then why not move to the Pearl Suite for dancing to your choice of entertainment and a DJ with lighting effects.



KEY

- Toilets
- Pillars
- 13A double floor sockets

CAPACITIES	MIN	MAX
Reception	60	400
Theatre	60	70
Banquet	40	100

LOCATION Second Floor





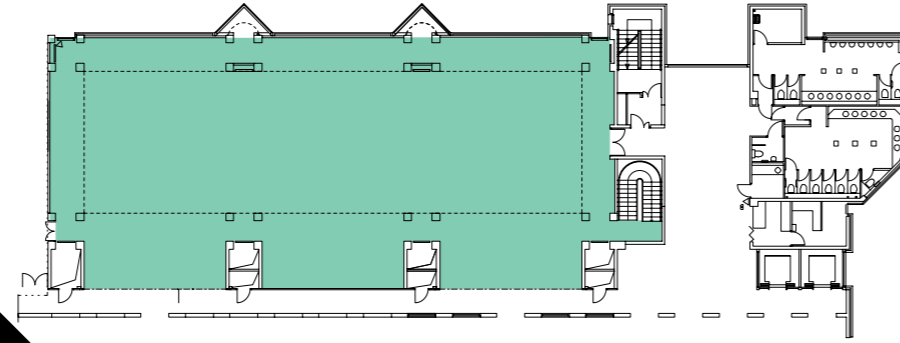
# TOURNAMENT GALLERY

The Tournament Gallery is one of the most impressive gallery displays on site giving you the opportunity to step far beyond any other reception or dinner experience.

From uncontrolled beginnings, the tournament developed into a highly regulated and sophisticated sport with as many varieties as football. From the 15th century onwards special weapons and very specialised armour were required for the various types of tournament and the Royal Armouries contains an unparalleled collection of these, exhibited in this light and airy setting.

This gallery charts and interprets the development of the three major types of tournament fighting – the tourney, the joust and foot combat.

We offer an outstanding start to your evening next to the combat arena where your guests can be treated to the display of knights in shining armour wielding two handed swords or pole-axes, whilst they enjoy sipping Champagne from the house of Laurent-Perrier and nibbling freshly made canapés created by our award winning in house chefs. Electric violins, a string quartet, a jazz trio, a harpist or even authentic wandering minstrels can set the mood during your specially designed and intricately prepared most delicious dinner.



KEY

- Toilets
- Pillars
- 13A double floor sockets

CAPACITIES	MIN	MAX
Reception	60	200
Theatre	n/a	n/a
Banquet	30	40

LOCATION Second Floor

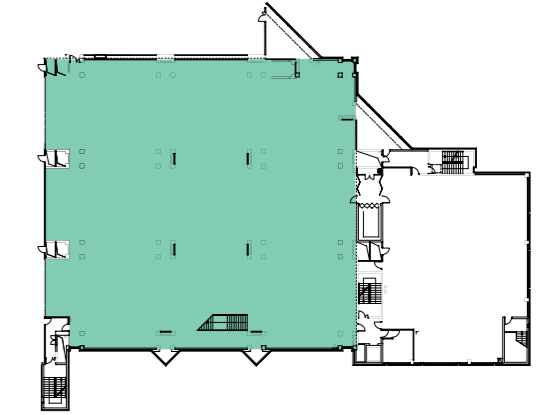
# ASIAN AND AFRICAN GALLERY

Unpack a treasure trove of delights and host a night to remember in our Asian and African Gallery.

The richness and diversity of our world-class collection of arms and armour is the perfect backdrop for a large drinks reception or banqueting experience.

Enjoy a pre-dinner aperitif in the company of our incredibly rare, full sized suit of elephant armour, made in 17th century India. Marvel at the stunning Samurai self defence weaponry and clothing on display, then dine in style in our replica Dojo and sample a perfectly curated feast of flavours from across the globe.

Stirring background music or live sitar performances are optional extras that can enhance your experience in the Asian and African Gallery, before heading to the Pearl Suite for a night of dancing into the early hours, then retiring to the on-site hotel in Leeds Dock.



KEY

- Toilets
- Pillars
- 13A double floor sockets

CAPACITIES	MIN	MAX
Reception	50	300
Theatre	30	100
Banquet	30	80

LOCATION Fourth Floor





**ROYAL ARMOURIES**





[venuehire@armouries.org.uk](mailto:venuehire@armouries.org.uk) | 0113 220 1990

[royalarmouriesconferenceandevents.org](http://royalarmouriesconferenceandevents.org)